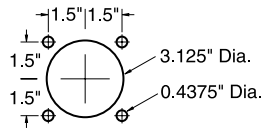
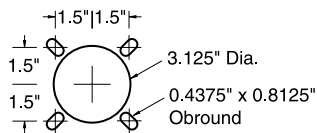


15-kV and 25-kV Thru-Bushings

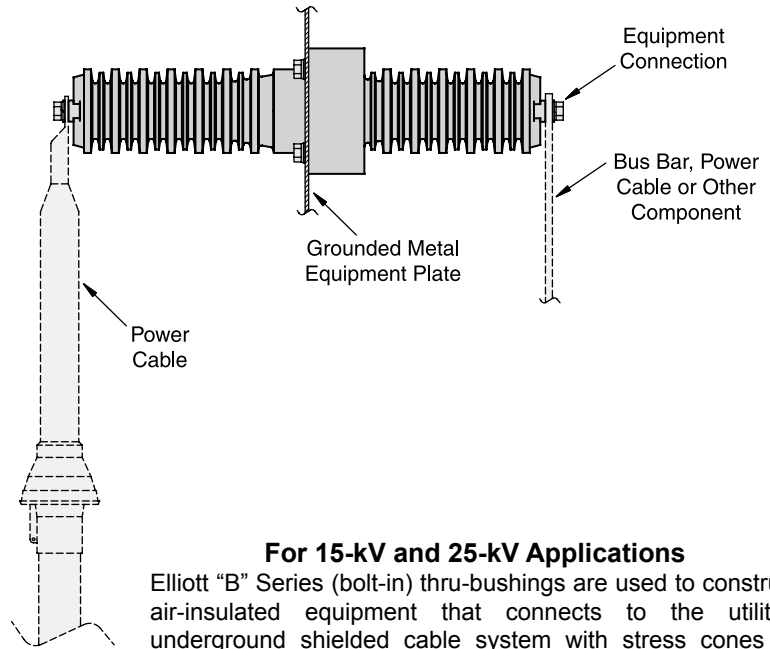
"B" Series (bolt-in) for Air-Insulated to Air-Insulated Service
200 Amp, 600 Amp and 1250 Amp



Standard Mounting Holes



Uni-Mount Mounting Holes



ELRIM Cycloaliphatic Epoxy Provides:

- Nontracking, self-scouring, nonweathering performance
- Superior dielectric strength, dielectric loss and power factor
- Choice of shapes allows design innovation
- Mechanical and thermal toughness
- Shatter-free arc flashover performance
- Oil resistant

Elliott Design Provides:

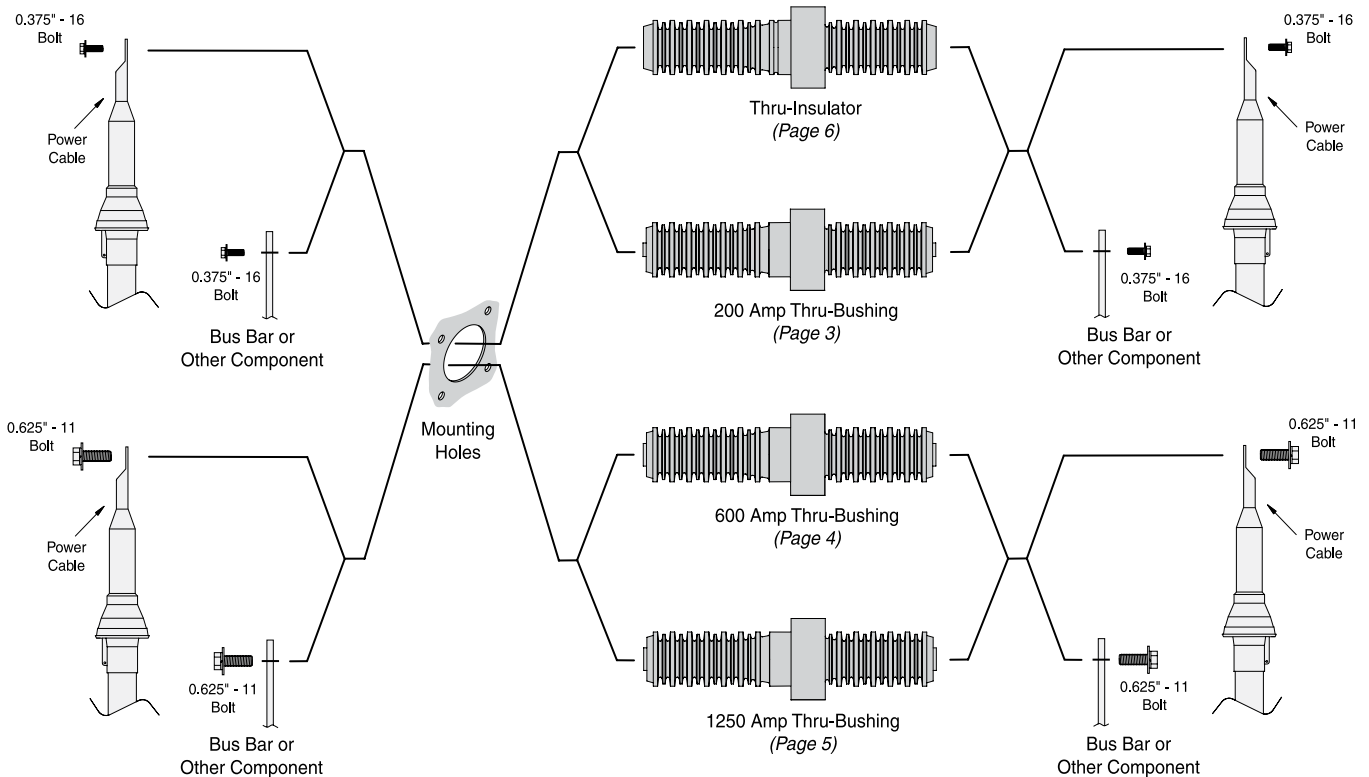
- Uni-Mount "Bolt-In" design
- Integral shielding to prevent destructive corona discharge
- Increased leakage distance and square-edge skirts resist contamination - wet or dry
- Generous dry arcing (strike) distance
- Large diameter live end terminal pad with female threads for direct contact of current-carrying parts and improved corona performance
- Thermal cycle withstand from +200° to -200° F for long life
- High Strength—field proven performance since 1975

For 15-kV and 25-kV Applications

Elliott "B" Series (bolt-in) thru-bushings are used to construct air-insulated equipment that connects to the utility's underground shielded cable system with stress cones or other 15 kV and 25 kV cable terminators. Thru-bushings are also used as roof-bushings, wall-bushings and to construct rear-connected switch and fuse mountings. The same 5-hole mounting provision accommodates all "B" Series bushings (the Uni-Mount hole pattern will accommodate Elliott "B" bushings and S&C elbow bushings). Gaskets are available when a liquid-tight seal is desirable. Integral shielding prevents "edge-of-hole" corona discharge. The bushing is provided with unique square-edge skirts and increased leakage distance to resist flashover when contaminated and wet. The heavy-duty flange provides excellent cantilever strength so bushings can be used to provide physical support for energized parts. In addition to IEEE Standard 386 design tests, Elliott thru-bushings are design tested for thermal cycle withstand from +200° to -200° F to assure long field life. Every thru-bushing is production tested "in-air" mounted in a grounded steel plate to accurately simulate operating conditions.

Ratings and Dimensions of Thru-Bushings & Thru-Insulator

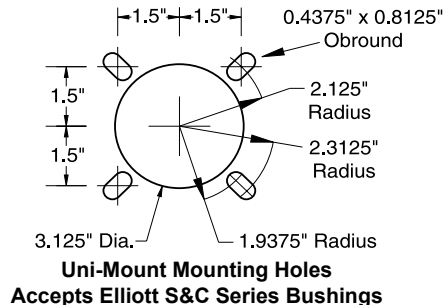
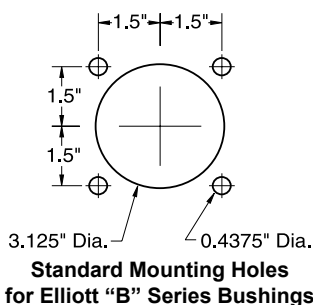
Catalog Number	Voltage Class kV	Continuous Current Amps	Withstand Test Voltage Kilovolts			Minimum Leakage Inches	Minimum Strike Inches
			Impulse 1.2 x 50	One Min. Dry	10 Sec. Dew		
1351-215TB	15	200	95	34	34	17	8.5
1351-225TB	25	200	125	40	40	17	8.5
1351-615TB	15	600	95	34	34	17	8.5
1351-625TB	25	600	125	40	40	17	8.5
1351-1215TB	15	1250	95	34	34	17	8.5
1351-1225TB	25	1250	125	40	40	17	8.5
1351-025TI Thru-Insulator	25	N/A	125	40	40	17	8.5



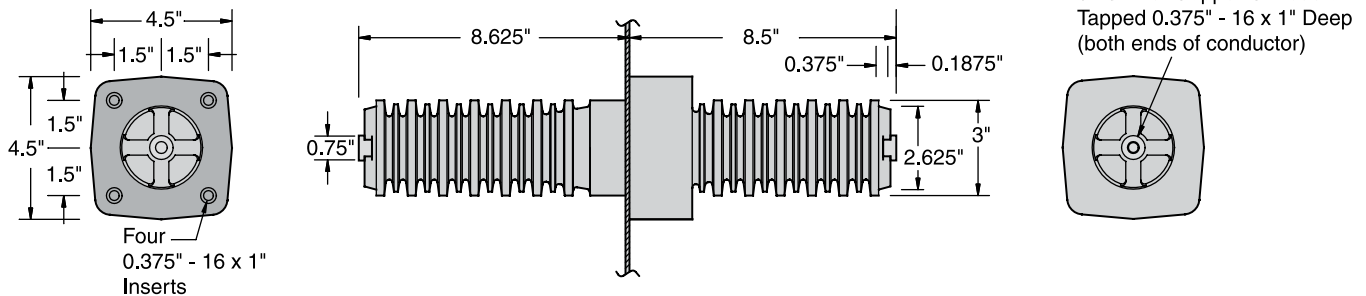
Common Mounting - All "B" series bushings have the same mounting bolt pattern. The installer can punch one mounting hole pattern (either Standard or Uni-Mount) and install any "B" series bushing or insulator. For example, equipment can be designed for 600 amp bushings, but actually be assembled with 600 and 200 amp bushings. A "bushing-style" insulator can be used to support one end of a bus bar, and be replaced in the field with a 200 or 600 amp bushing.

Index Slots - Elliott "B" series bushings and insulators feature four keying slots on the live end. Fuse clips and hinge kits are available that bolt directly to the bushing conductor (or the thru-insulator insert) and key in the slots to prevent rotation.

Conductor Connection - Female threads in the live end of the conductor allow the attachment of live parts of almost any thickness. The bolted connection of current-carrying parts does not depend on current transfer through the fastener's thread-to-thread contact. Additional advantages of the bolted connection are higher clamping pressure and elimination of exposed sharp threads that could initiate corona.



200 Amp Thru-Bushing



Catalog Number	#1351-215TB	#1351-225TB
Voltage Class	15 kV	25 kV
Phase-to-Ground Voltage	8.3 kV	15.2 kV
BIL	>95 kV	125 kV
A.C. Withstand - 1 Min. Dry	>34 kV	40 kV
10 Sec. Dew	>34 kV	40 kV
D.C. Withstand - 15 Min. Dry	>53 kV	78 kV
Corona Extinction Level - Minimum	>11 kV	>19 kV
Continuous Current	200 Amps	200 Amps
Momentary - RMS, Sym., 0.17 sec.	10,000 Amps	10,000 Amps
RMS, Sym., 3 sec.	3,500 Amps	3,500 Amps

Leakage Distance, Inches	>17
Dry Arcing Distance, Inches	8.5
Mechanical - Strength Rating, Pounds	
Cantilever, Ultimate 2.5 inches past end	>450
Tensile, Pounds	>2,500
Torsion, Inch-Pounds	>700
Compression, Pounds	20,000
Insert Thread Size	0.375" - 16 x 1"
Conductor (live end) Thread Size	0.375" - 16 x 1"
Net Weight, Pounds (kg)	7.4 (3.35)

Typical Specifications - 200 Amp Thru-Bushing

15-kV Thru-Bushing - 200 Amps

Bushings shall be 200 ampere Elliott #1351-215TB, 15 kV Class (8.3 kV to ground) Air-Insulated Live Terminal Thru-Bushings, 95 kV BIL, *for use with 8.3/14.4 kV systems*. The bushings shall be pressure-molded cycloaliphatic epoxy with a 0.75-inch diameter copper conductor that is drilled and tapped 0.375-inch – 16UNC x 1-inch deep on both ends to provide for connection of the bus and/or live parts. Integral shielding shall be provided to eliminate partial discharge caused by off-center mounting and mounting holes that may have sharp edges or burrs. Bushings shall mount in a 3.125-inch diameter opening and bolt in place to allow field replacement with standard tools. To assure adequate strength for apparatus support, the bushing shall withstand a minimum cantilever loading of 250 pounds for five minutes without damage. The bushing mounting bolts shall be self-locking stainless steel serrated flange hex-head bolts that "cut" through the enclosure protective finish to ground the integral shielding of each bushing. Each bushing shall be tested in free air, mounted in a grounded steel plate not less than 10 inches x 10 inches and shall meet the requirements for 15 kV devices in accordance with IEEE Standard 386 (latest revision), including 100 percent production testing.

25-kV Thru-Bushing - 200 Amps

Bushings shall be 200 ampere Elliott #1351-225TB, 25 kV Class (15.2 kV to ground) Air-Insulated Live Terminal Thru-Bushings, 125 kV BIL, *for use with either 8.3/14.4 kV or 15.2/26.3 kV systems*. The bushings shall be pressure-molded cycloaliphatic epoxy with a 0.75-inch diameter copper conductor that is drilled and tapped 0.375-inch – 16UNC x 1-inch deep on both ends to provide for connection of the bus and/or live parts. Integral shielding shall be provided to eliminate partial discharge caused by off-center mounting and mounting holes that may have sharp edges or burrs. Bushings shall mount in a 3.125-inch diameter opening and bolt in place to allow field replacement with standard tools. To assure adequate strength for apparatus support, the bushing shall withstand a minimum cantilever loading of 250 pounds for five minutes without damage. The bushing mounting bolts shall be self-locking stainless steel serrated flange hex-head bolts that "cut" through the enclosure protective finish to ground the integral shielding of each bushing. Each bushing shall be tested in free air, mounted in a grounded steel plate not less than 10 inches x 10 inches and shall meet the requirements for 25 kV devices in accordance with IEEE Standard 386 (latest revision), including 100 percent production testing.

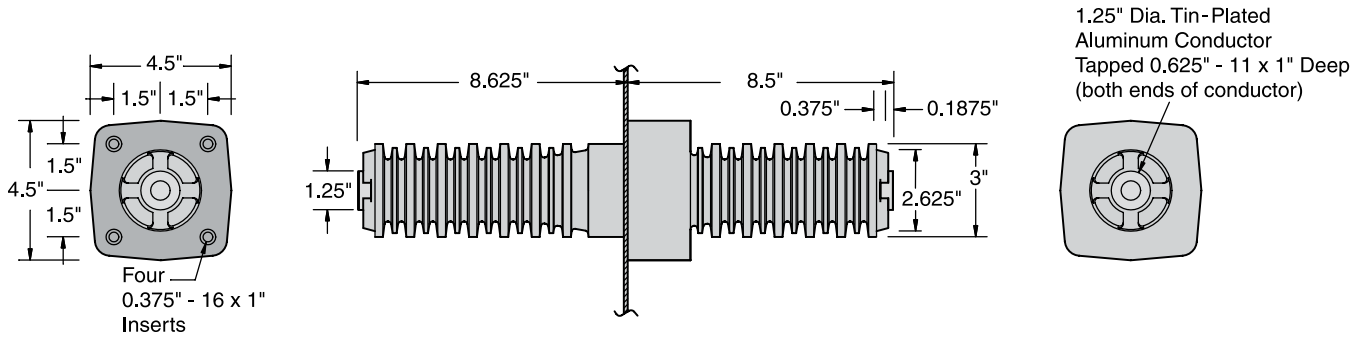


15-kV and 25-kV Thru-Bushing

"B" Series (bolt-in) for Air-Insulated to Air-Insulated Service
200 Amp, 600 Amp and 1250 Amp

Descriptive
Bulletin
1351
Page 4 2008

600 Amp Thru-Bushing



Catalog Number	#1351-615TB	#1351-625TB	
Voltage Class.....	15 kV	25 kV	Leakage Distance, Inches.....>17
Phase-to-Ground Voltage.....	8.3 kV	15.2 kV	Dry Arcing Distance, Inches.....8.5
BIL.....	>95 kV	125 kV	Mechanical - Strength Rating, Pounds
A.C. Withstand - 1 Min. Dry.....	>34 kV	40 kV	Cantilever, Ultimate 2.5 inches past end.....>900
10 Sec. Dew.....	>34 kV	40 kV	Tensile, Pounds.....>4,000
D.C. Withstand - 15 Min. Dry.....	>53 kV	78 kV	Torsion, Inch-Pounds.....>2,500
Corona Extinction Level - Minimum.....	>11 kV	>19 kV	Compression, Pounds.....20,000
Continuous Current.....	600 Amps	600 Amps	Insert Thread Size.....0.375" - 16 x 1"
Momentary - RMS, Sym., 0.17 sec.....	25,000 Amps	25,000 Amps	Conductor (live end) Thread Size.....0.625" - 11 x 1"
RMS, Sym., 3 sec.....	10,000 Amps	10,000 Amps	Net Weight, Pounds (kg).....6.87 (3.09)

Typical Specifications - 600 Amp Thru-Bushing

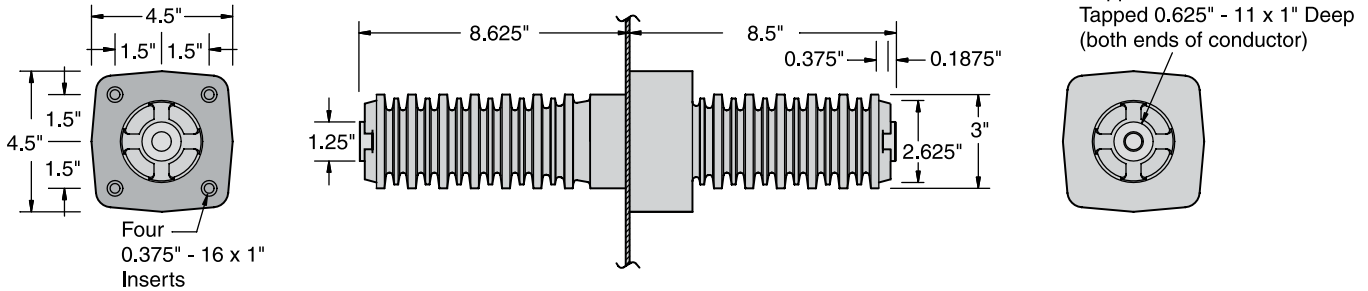
15-kV Thru-Bushing - 600 Amps

Bushings shall be 600 ampere Elliott #1351-615TB, 15 kV Class (8.3 kV to ground) Air-Insulated Live Terminal Thru-Bushings, 95 kV BIL, *for use with 8.3/14.4 kV systems*. The bushings shall be pressure-molded cycloaliphatic epoxy with a 1.25-inch diameter tin-plated aluminum conductor that is drilled and tapped 0.625-inch – 11UNC x 1-inch deep on both ends to provide for connection of the bus and/or live parts. Integral shielding shall be provided to eliminate partial discharge caused by off-center mounting and mounting holes that may have sharp edges or burrs. Bushings shall mount in a 3.125-inch diameter opening and bolt in place to allow field replacement with standard tools. To assure adequate strength for apparatus support, the bushing shall withstand a minimum cantilever loading of 500 pounds for five minutes without damage. The bushing mounting bolts shall be self-locking stainless steel serrated flange hex-head bolts that “cut” through the enclosure protective finish to ground the integral shielding of each bushing. Each bushing shall be tested in free air, mounted in a grounded steel plate not less than 10 inches x 10 inches and shall meet the requirements for 15 kV devices in accordance with the test values of IEEE Standard 386 (latest revision), including 100 percent production testing.

25-kV Thru-Bushing - 600 Amps

Bushings shall be 600 ampere Elliott #1351-625TB, 25 kV Class (15.2 kV to ground) Air-Insulated Live Terminal Thru-Bushings, 125 kV BIL, *for use with either 8.3/14.4 kV or 15.2/26.3 kV systems*. The bushings shall be pressure-molded cycloaliphatic epoxy with a 1.25-inch diameter tin-plated aluminum conductor that is drilled and tapped 0.625-inch – 11UNC x 1-inch deep on both ends to provide for connection of the bus and/or live parts. Integral shielding shall be provided to eliminate partial discharge caused by off-center mounting and mounting holes that may have sharp edges or burrs. Bushings shall mount in a 3.125-inch diameter opening and bolt in place to allow field replacement with standard tools. To assure adequate strength for apparatus support, the bushing shall withstand a minimum cantilever loading of 500 pounds for five minutes without damage. The bushing mounting bolts shall be self-locking stainless steel serrated flange hex-head bolts that “cut” through the enclosure protective finish to ground the integral shielding of each bushing. Each bushing shall be tested in free air, mounted in a grounded steel plate not less than 10 inches x 10 inches and shall meet the requirements for 25 kV devices in accordance with the test values of IEEE Standard 386 (latest revision), including 100 percent production testing.

1250 Amp Thru-Bushing



Catalog Number	#1351-1215TB	#1351-1225TB
Voltage Class.....	15 kV	25 kV
Phase-to-Ground Voltage.....	8.3 kV	15.2 kV
BIL.....	>95 kV	125 kV
A.C. Withstand - 1 Min. Dry.....	>34 kV	40 kV
10 Sec. Dew.....	>34 kV	40 kV
D.C. Withstand - 15 Min. Dry.....	>53 kV	78 kV
Corona Extinction Level - Minimum.....	>11 kV	>19 kV
Continuous Current.....	1,250 Amps	1,250 Amps
Momentary - RMS, Sym., 0.17 sec.....	25,000 Amps	25,000 Amps
RMS, Sym., 3 sec.....	10,000 Amps	10,000 Amps

Leakage Distance, Inches.....	>17
Dry Arcing Distance, Inches.....	8.5
Mechanical - Strength Rating, Pounds	
Cantilever, Ultimate 2.5 inches past end.....	>900
Tensile, Pounds.....	>4,000
Torsion, Inch-Pounds.....	>2,500
Compression, Pounds.....	20,000
Insert Thread Size.....	0.375" - 16 x 1"
Conductor (live end) Thread Size.....	0.625" - 11 x 1"
Net Weight, Pounds (kg).....	11.34 (5.10)

Typical Specifications - 1250 Amp Thru-Bushing

15-kV Thru-Bushing - 1250 Amps

Bushings shall be 1250 ampere Elliott #1351-1215TB, 15 kV Class (8.3 kV to ground) Air-Insulated Live Terminal Thru-Bushings, 95 kV BIL, *for use with 8.3/14.4 kV systems*. The bushings shall be pressure-molded cycloaliphatic epoxy with a 1.25-inch diameter silver-plated copper conductor that is drilled and tapped 0.625-inch – 11UNC x 1-inch deep on both ends to provide for connection of the bus and/or live parts. Integral shielding shall be provided to eliminate partial discharge caused by off-center mounting and mounting holes that may have sharp edges or burrs. Bushings shall mount in a 3.125-inch diameter opening and bolt in place to allow field replacement with standard tools. To assure adequate strength for apparatus support, the bushing shall withstand a minimum cantilever loading of 500 pounds for five minutes without damage. The bushing mounting bolts shall be self-locking stainless steel serrated flange hex-head bolts that "cut" through the enclosure protective finish to ground the integral shielding of each bushing. Each bushing shall be tested in free air, mounted in a grounded steel plate not less than 10 inches x 10 inches and shall meet the requirements for 15 kV devices in accordance with the test values of IEEE Standard 386 (latest revision), including 100 percent production testing.

25-kV Thru-Bushing - 1250 Amps

Bushings shall be 1250 ampere Elliott #1351-1225TB, 25 kV Class (15.2 kV to ground) Air-Insulated Live Terminal Thru-Bushings, 125 kV BIL, *for use with either 8.3/14.4 kV or 15.2/26.3 kV systems*. The bushings shall be pressure-molded cycloaliphatic epoxy with a 1.25-inch diameter silver-plated copper conductor that is drilled and tapped 0.625-inch – 11UNC x 1-inch deep on both ends to provide for connection of the bus and/or live parts. Integral shielding shall be provided to eliminate partial discharge caused by off-center mounting and mounting holes that may have sharp edges or burrs. Bushings shall mount in a 3.125-inch diameter opening and bolt in place to allow field replacement with standard tools. To assure adequate strength for apparatus support, the bushing shall withstand a minimum cantilever loading of 500 pounds for five minutes without damage. The bushing mounting bolts shall be self-locking stainless steel serrated flange hex-head bolts that "cut" through the enclosure protective finish to ground the integral shielding of each bushing. Each bushing shall be tested in free air, mounted in a grounded steel plate not less than 10 inches x 10 inches and shall meet the requirements for 25 kV devices in accordance with the test values of IEEE Standard 386 (latest revision), including 100 percent production testing.

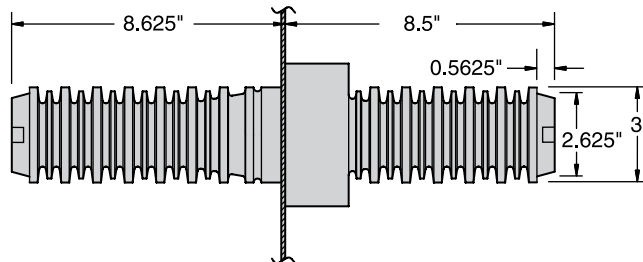
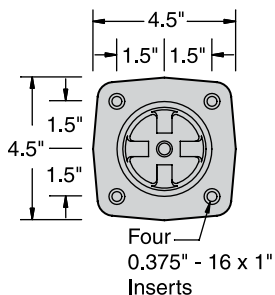


15-kV and 25-kV Thru-Bushing

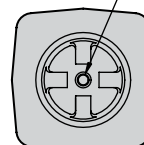
"B" Series (bolt-in) for Air-Insulated to Air-Insulated Service
200 Amp, 600 Amp and 1250 Amp

Descriptive
Bulletin
1351
Page 6 2008

Thru-Insulator



Brass Insert Tapped
0.375" - 16 x 1" Deep
(both ends)



Catalog Number

#1351-025TI

Voltage Class.....	25 kV
Phase-to-Ground Voltage.....	15.2 kV
BIL.....	125 kV
A.C. Withstand - 1 Min. Dry.....	40 kV
10 Sec. Dew.....	40 kV
D.C. Withstand - 15 Min. Dry.....	78 kV
Corona Extinction Level - Minimum.....	>19 kV
Continuous Current.....	N/A
Momentary - RMS, Sym., 0.17 sec.....	N/A
RMS, Sym., 3 sec.....	N/A

Leakage Distance, Inches.....	>17
Dry Arcing Distance, Inches.....	8.5
Mechanical - Strength Rating, Pounds	
Cantilever, Ultimate 2.5 inches past end.....	>1,000
Tensile, Pounds.....	>3,000
Torsion, Inch-Pounds.....	>1,500
Compression, Pounds.....	20,000
Insert Thread Size.....	0.375" - 16 x 1"
Live End Thread Size.....	0.375" - 16 x 1"
Net Weight, Pounds (kg).....	4.95 (2.23)

Typical Specifications - Thru-Insulator

25-kV "Bushing-Style" Insulators

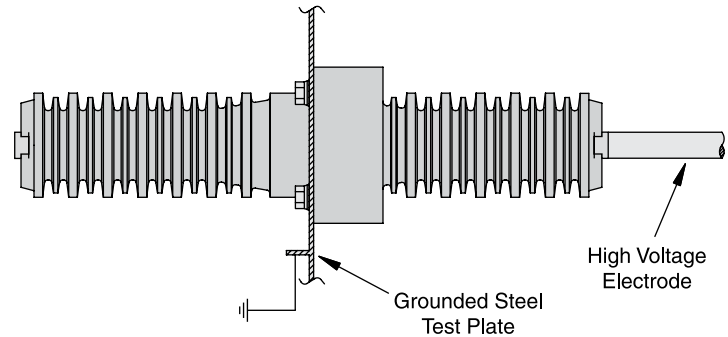
Insulators shall be Elliott #1351-025TI, 25 kV Class (15.2 kV to ground) Air-Insulated "Bushing-Style" Thru-Insulators, 125 kV BIL, *for use with 8.3/14.4 kV or 15.2/26.3 kV systems*. The insulators shall be nontracking, self-scouring, nonweathering pressure-molded cycloaliphatic epoxy with cast-in-place brass inserts. The brass inserts shall be drilled and tapped 0.375-inch – 16UNC x 1-inch deep to provide for connection of the bus and/or live parts. The skirts shall be square-edge design to provide 17 inches or more leakage distance for superior contamination resistance. Surface damage to insulators shall expose material of the

same composition and characteristics so insulators with minor surface damage will not require replacement. The insulators shall provide adequate thermal cycle withstand to assure trouble-free field service in the most severe climatic conditions established by in-house testing and field operating experience. Insulators shall mount in a 3.125-inch diameter opening and bolt in place to allow field replacement with standard tools. To assure adequate strength for apparatus support, the insulator shall withstand a minimum cantilever loading of 600 pounds for five minutes without damage. The insulator mounting bolts shall be self-locking stainless steel serrated flange hex-head bolts.

Production Tests

Every Bushing is production tested in free air, mounted in an 11-gauge grounded steel plate not less than 10 inches x 10 inches, to accurately simulate operating conditions. Each bushing must meet or exceed the requirements for 8.3/14.4 kV or 15.2/26.3 kV devices in accordance with the test values of IEEE Standard 386 (latest revision) for partial discharge (corona) and A.C. voltage withstand when tested in this manner.

Test Configuration

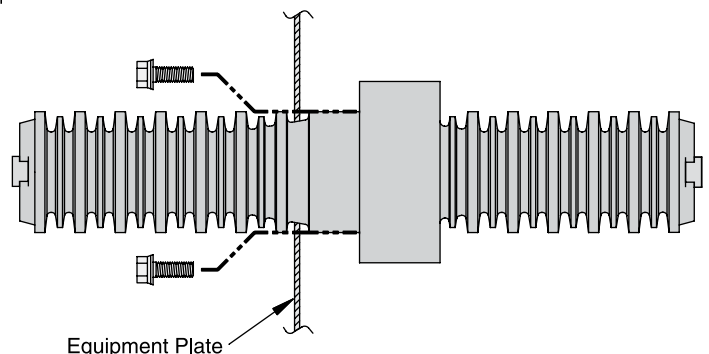
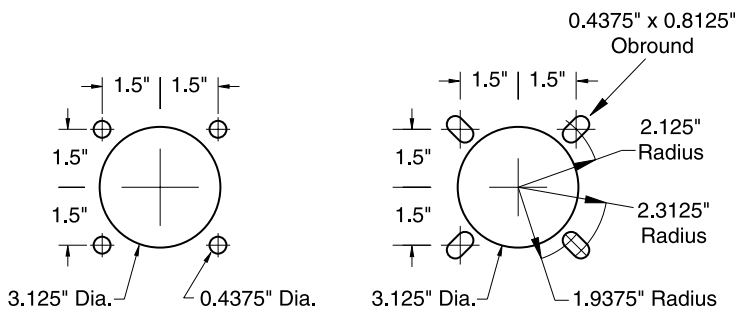


Installation Instructions

Elliott "B" Series Apparatus Bushings require a 3.125" diameter mounting hole with four 0.4375" diameter bolt holes. The thru-bushing bolts in place utilizing four 0.375" - 16 x 1" serrated flange hex-head bolts (or bolts with external tooth lock washers). Gaskets are available when a liquid-tight seal is desirable.

15 kV and 25 kV Thru-Bushings mount on either side of the mounting hole. When installed in a 0.125" plate, both sides of the bushing extend 8.5 inches.

1. The thru-bushing installs from either side for easy installation.
2. Serrated flange bolts (or bolts and external tooth lock washers) are installed. The bolts should be tightened in a uniform manner (rather than one-by-one in a random sequence). Do not apply more than 90 inch-pounds torque to each bolt. The serrated flange bolts (or external tooth lock washers) must "cut" into the mounting plate to provide a connection from the shielding to the grounded mounting plate. If the bushing is mounted on an ungrounded or insulated plate (such as fiberglass), a ground strap should be attached to one of the mounting bolts.



**Standard Mounting Holes
for Elliott "B" Series Bushings**

**Uni-Mount Mounting Holes
Accepts Elliott and S&C Bushings**

Equipment Plate



15-kV and 25-kV Thru-Bushing
"B" Series (bolt-in) for Air-Insulated to Air-Insulated Service
200 Amp, 600 Amp and 1250 Amp

Descriptive
Bulletin
1351
Page 8 2008

**If you do not find the design
you need**

PLEASE CONTACT

our REPRESENTATIVE or the FACTORY