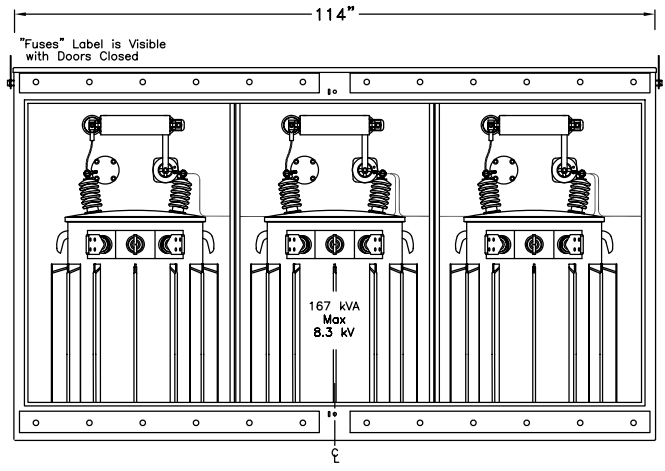
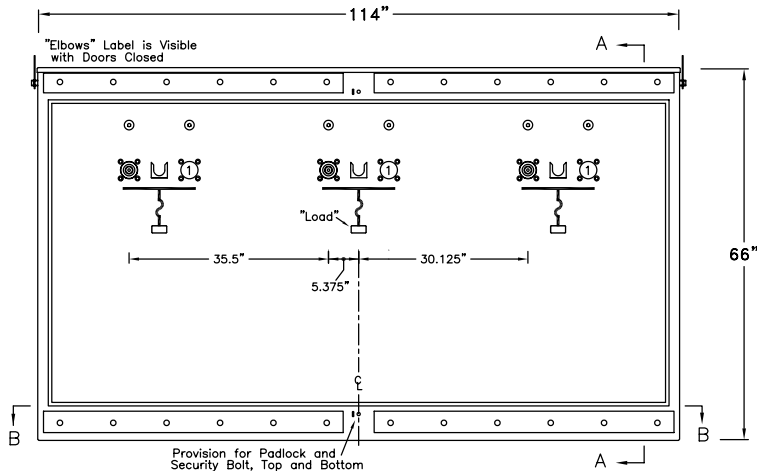
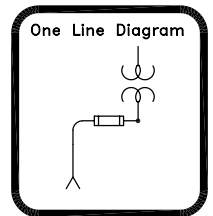
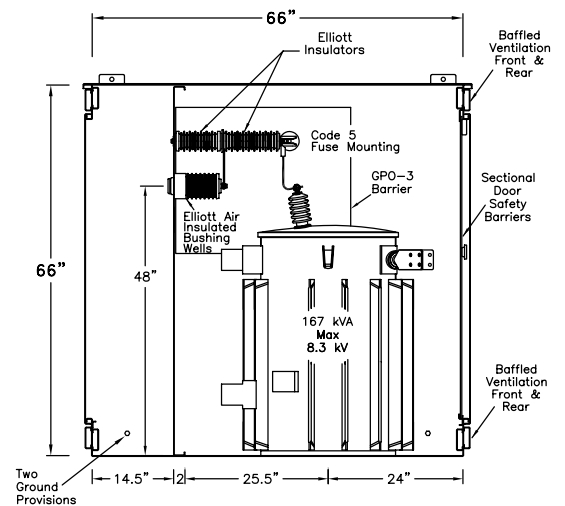
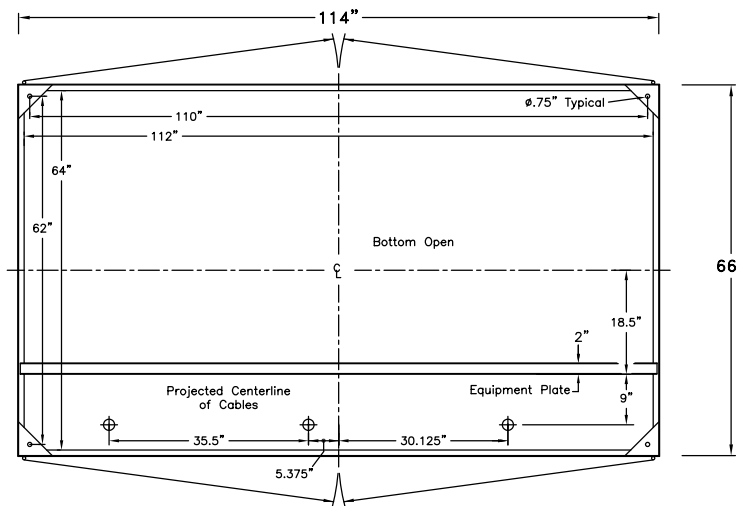


# EPM-PTS-15-311P-E2-CM5-167KVA

Three-Phase - Two Ways per Phase  
 200 Amp Elliott Air Insulated Bushing Wells  
 140 Amp (Max) 8.3 kV Clip Mounted CL Fuse Provisions  
 8.3/14.4 kV Grd. Wye Max Design  
 60 Hertz, 95 kV BIL



① Bushing Wells may be added if circuit requirements change.



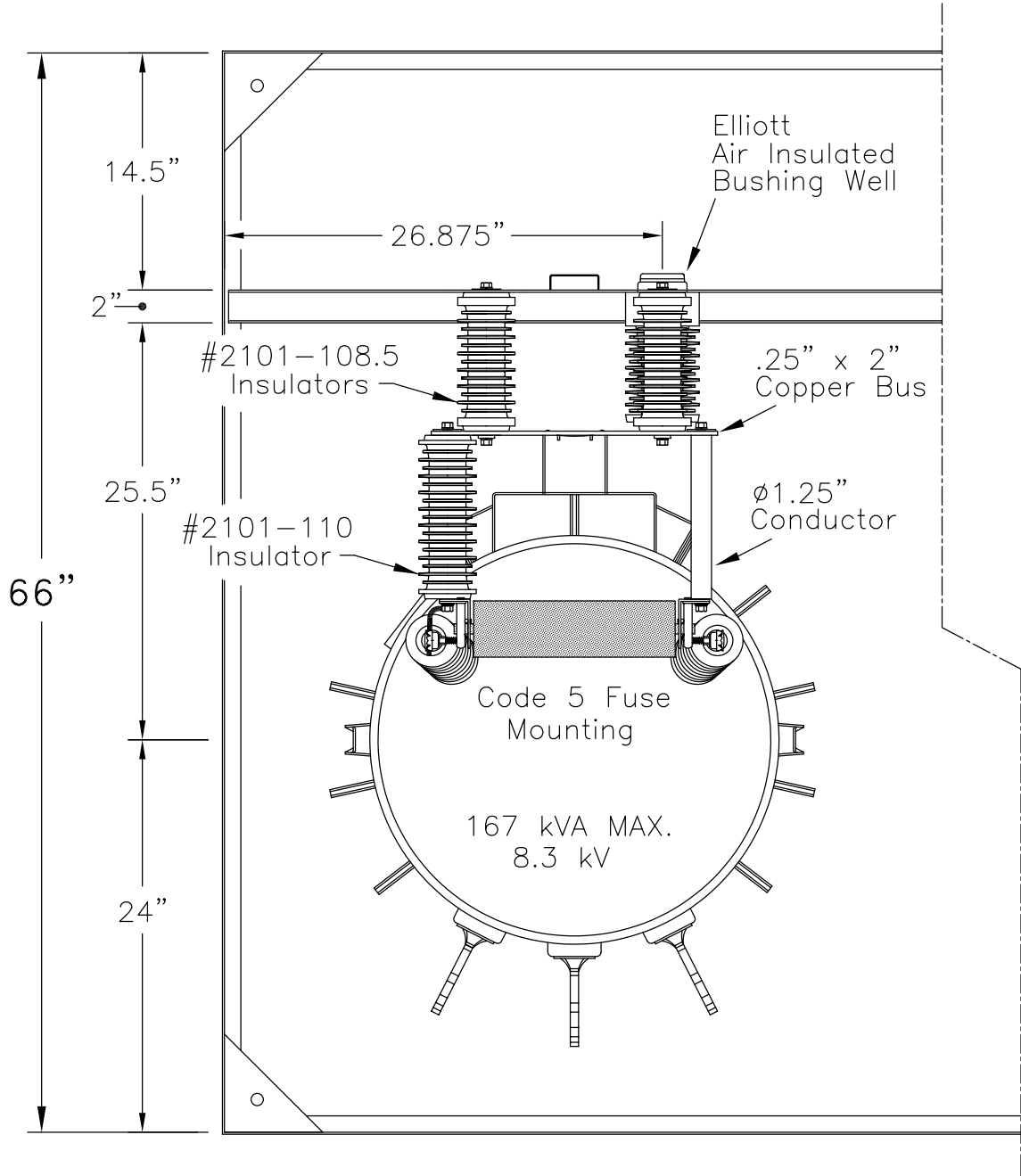
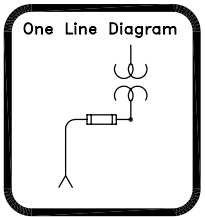
11 Gauge Steel Enclosure  
 Removable Cross Kinked Top  
 Stainless Steel Hinges  
 Stainless Steel Parking Stands  
 Recessed Stainless Steel Penta Head Security Bolts  
 Clear Polycarbonate Sectional Door Safety Barriers  
 6" Min Strike Distance to Ground  
 8" Min Strike Distance Phase to Phase  
 Paint "Pad-Mount Green" Munsell #7GY 3.29/1.5

EPM-PTS-15-311P-E2-CM5-167KVA Layout		
Date: 09-09-99	File: D99348R0	Drawing No.:
By: ACM	Approved by: JES	99-348-1
Elliott Industries, Inc. Bossier City, Louisiana 71171-6388 U.S.A.		



EPM-PTS-15-311P-E2-CM5-167KVA

Three-Phase - Two Ways per Phase  
 200 Amp Elliott Air Insulated Bushing Wells  
 140 Amp (Max) 8.3 kV Clip Mounted CL Fuse Provisions  
 8.3/14.4 kV Grd. Wye Max Design  
 60 Hertz, 95 kV BIL



Top View of One Phase

EPM-PTS-15-311P-E2-CM5-167KVA		
Top View of One Phase		
Date: 09-09-99	File: D99348R0	Drawing No.:
By: ACM	Approved by: JES	99-348-3
Elliott Industries, Inc.		
Bossier City, Louisiana 71171-6388 U.S.A.		