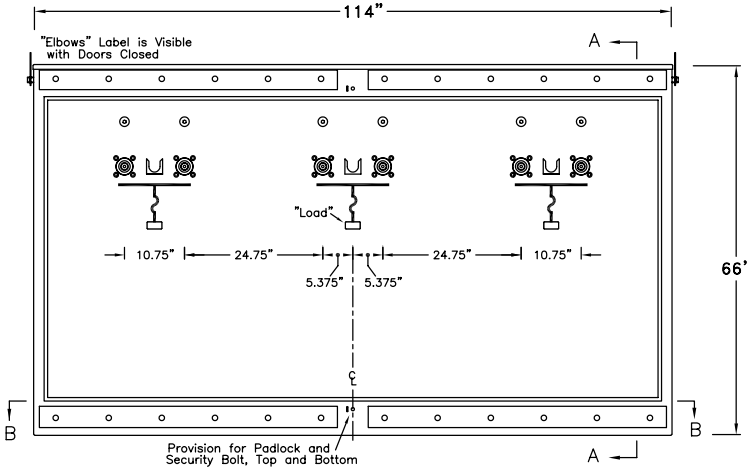
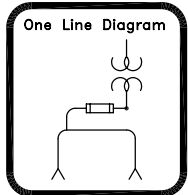
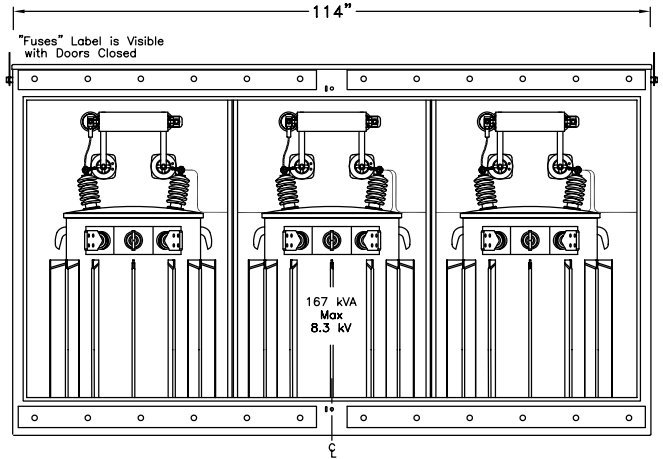


EPM-PTS-15-321P-E2-CM5-167KVA

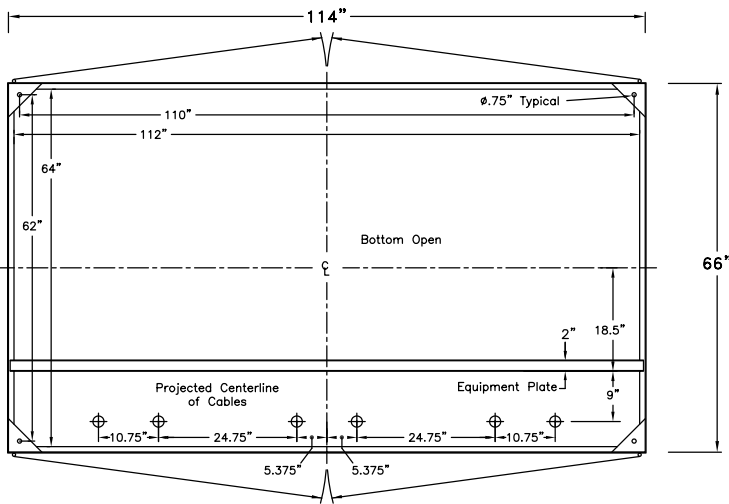
Three-Phase - Three Ways per Phase
 200 Amp Elliott Air Insulated Bushing Wells
 140 Amp (Max) 8.3 kV Clip Mounted CL Fuse Provisions
 8.3/14.4 kV Grd. Wye Max Design
 60 Hertz, 95 kV BIL



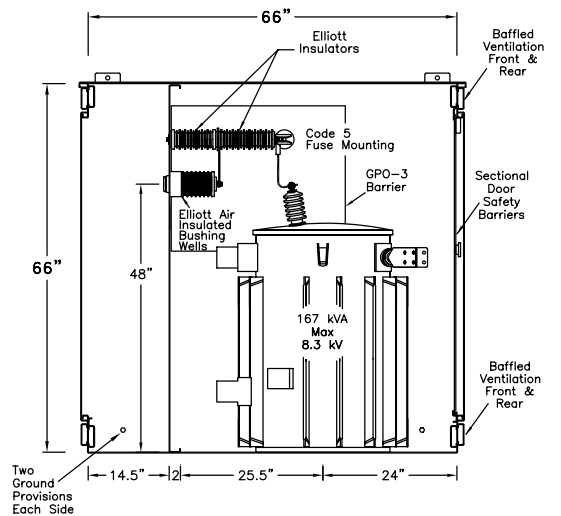
Front View
Doors Removed



Rear View
Doors & Door Safety Barriers Removed



Section BB



Section AA

- 11 Gauge Steel Enclosure
- Removable Cross Kinked Top
- Stainless Steel Hinges
- Stainless Steel Parking Stands
- Recessed Stainless Steel Penta Head Security Bolts
- Clear Polycarbonate Sectional Door Safety Barriers
- 6" Min Strike Distance to Ground
- 8" Min Strike Distance Phase to Phase
- Paint "Pad-Mount Green" Munsell #7GY 3.29/1.5

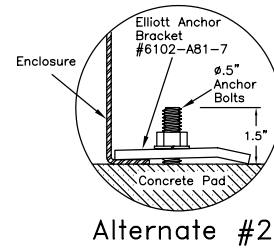
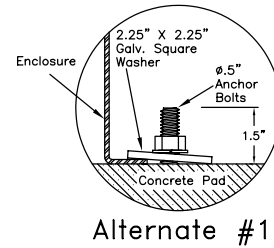
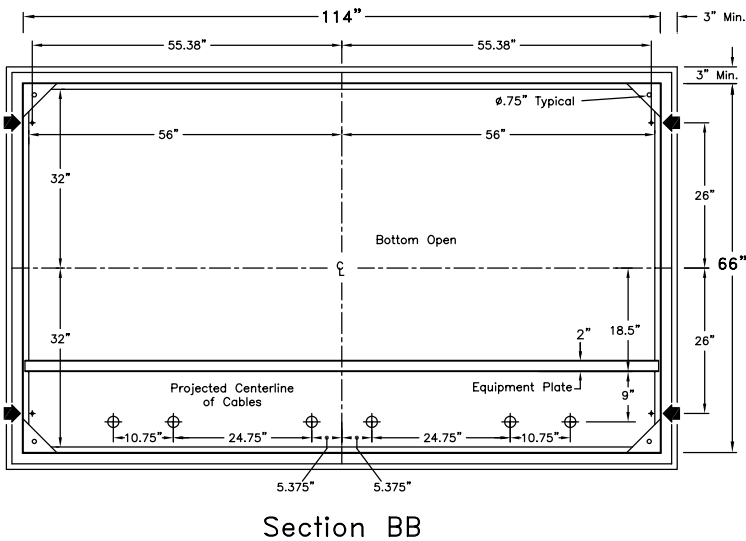
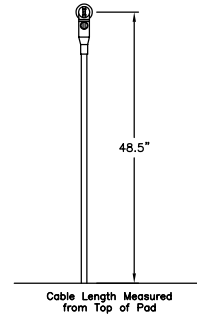
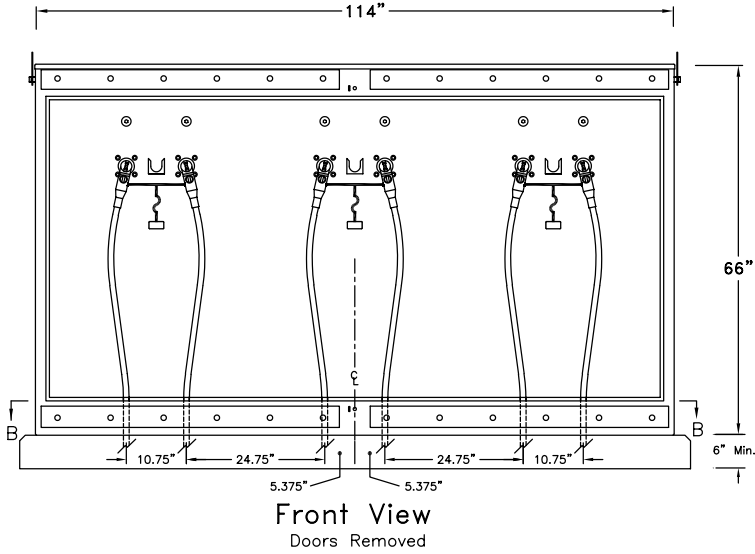
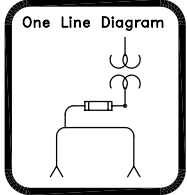
EPM-PTS-15-321P-E2-CM5-167KVA Layout

Date: 07-28-99	File: D97298R1	Drawing No.:
By: R.M.	Approved by: JES	97-298-1

Elliott Industries, Inc.
 Bossier City, Louisiana 71171-6388 U.S.A.

EPM-PTS-15-321P-E2-CM5-167KVA

Proposed Cable Training and
Typical Pad Requirements

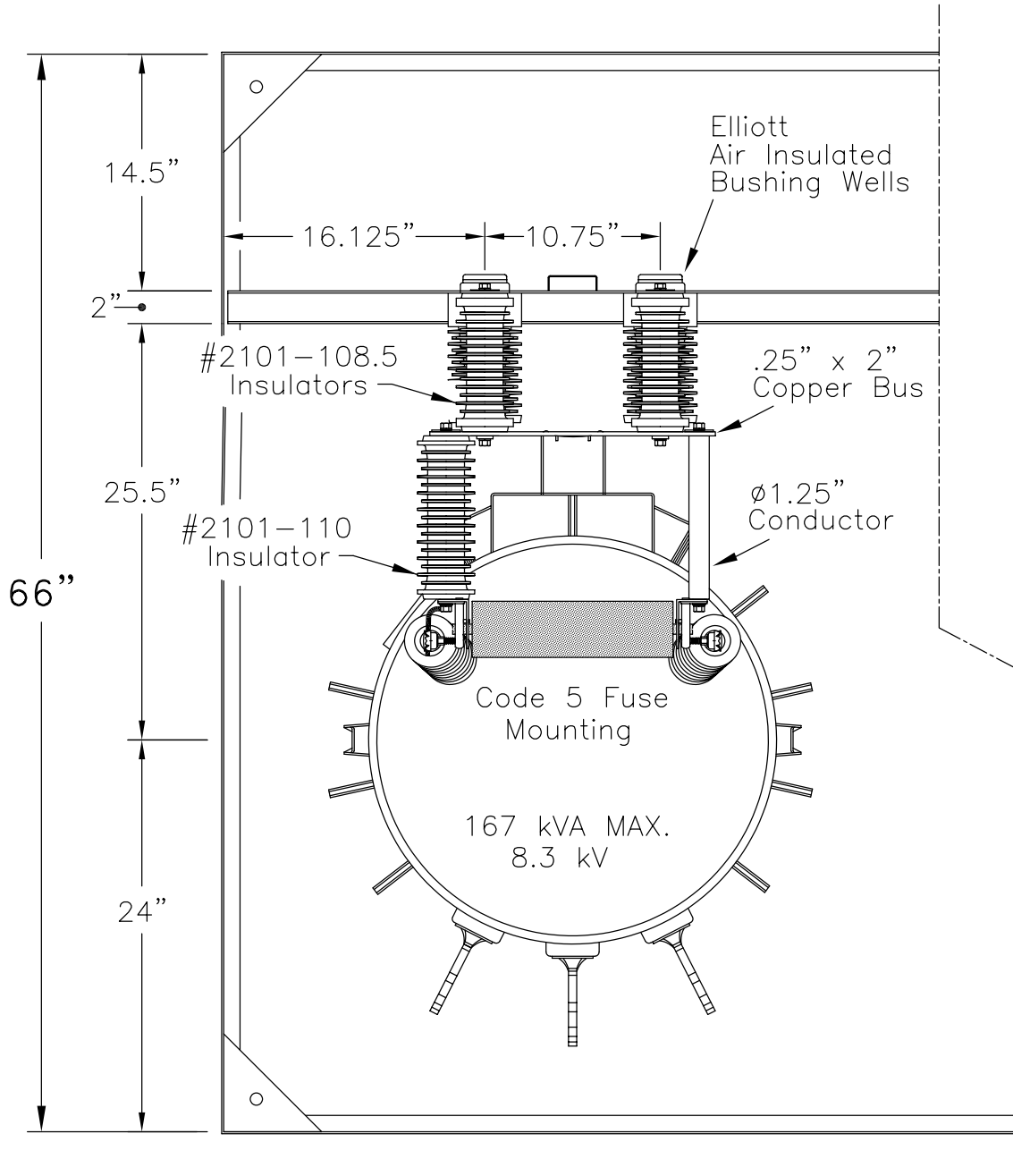
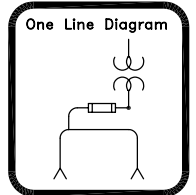


+ Anchor Bolt Locations

EPM-PTS-15-321P-E2-CM5-167KVA		
Proposed Cable Training & Pad Requirements		
Date: 07-28-99	File: D97298R1	Drawing No.:
By: R.M.	Approved by: JES	97-298-2
Elliott Industries, Inc. Bossier City, Louisiana 71171-6388 U.S.A.		

EPM-PTS-15-321P-E2-CM5-167KVA

Three-Phase - Three Ways per Phase
 200 Amp Elliott Air Insulated Bushing Wells
 140 Amp (Max) 8.3 kV Clip Mounted CL Fuse Provisions
 8.3/14.4 kV Grd. Wye Max Design
 60 Hertz, 95 kV BIL



Top View of One Phase

EPM-PTS-15-321P-E2-CM5-167KVA Top View of One Phase		
Date: 07-28-99	File: D97298R1	Drawing No.:
By: R.M.	Approved by: JES	97-298-3
Elliott Industries, Inc. Bossier City, Louisiana 71171-6388 U.S.A.		